

# PROSTHETIC RESTORATION - DIGITAL CASE

## Bar-retained overdenture with Locator® attachment

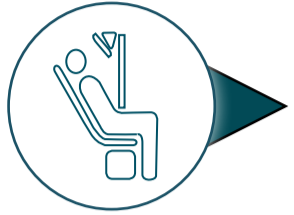
CAD/CAM

### Treatment Plan

Implant-supported dentures are today part of routine dental practice for patients with atrophic maxilla. This adaptable system has a low rate of complications and a high rate of patient satisfaction and acceptance.

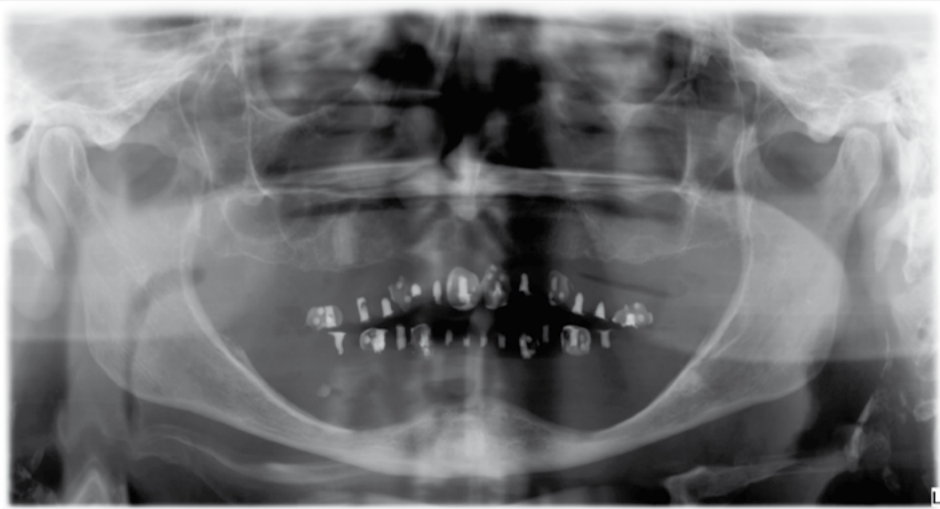
Complete case: [www.avinentexperiences.com](http://www.avinentexperiences.com)

**AUTHOR**  
**DR. SERGI PEDEMONTE**

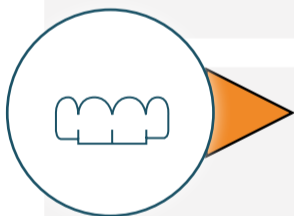
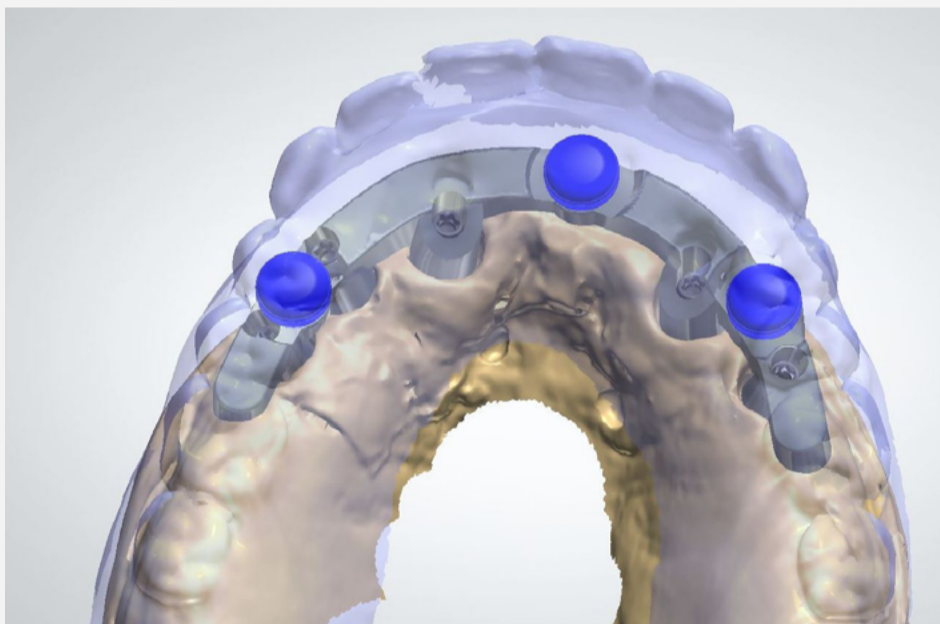
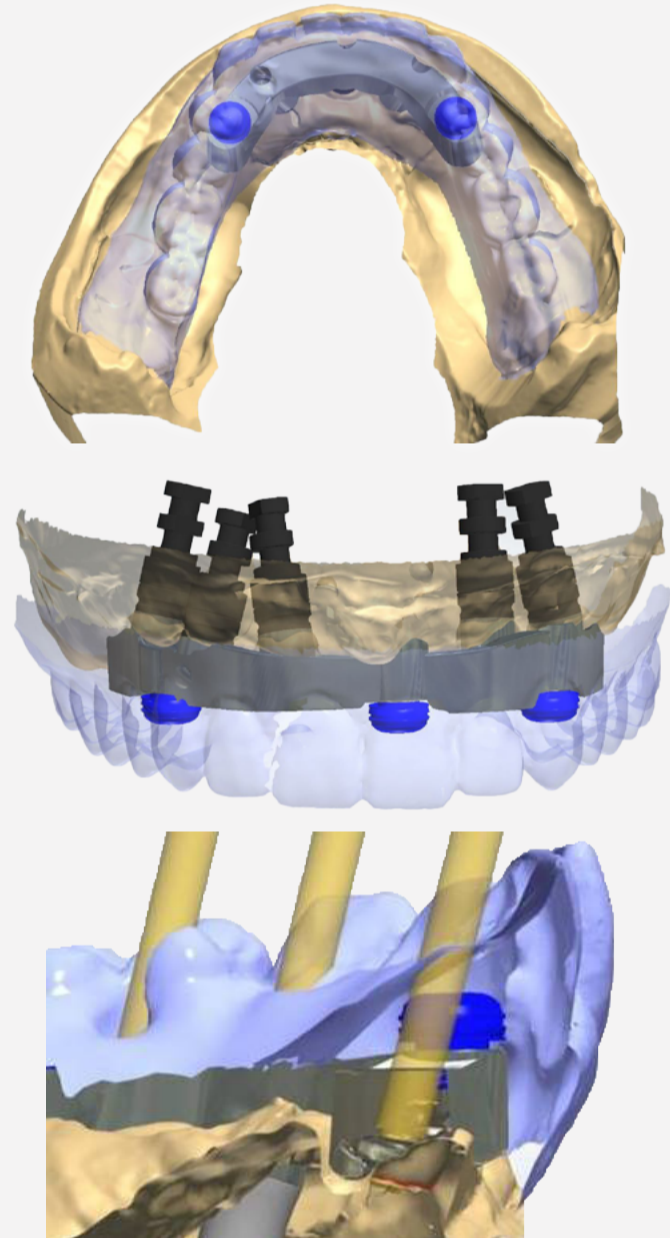
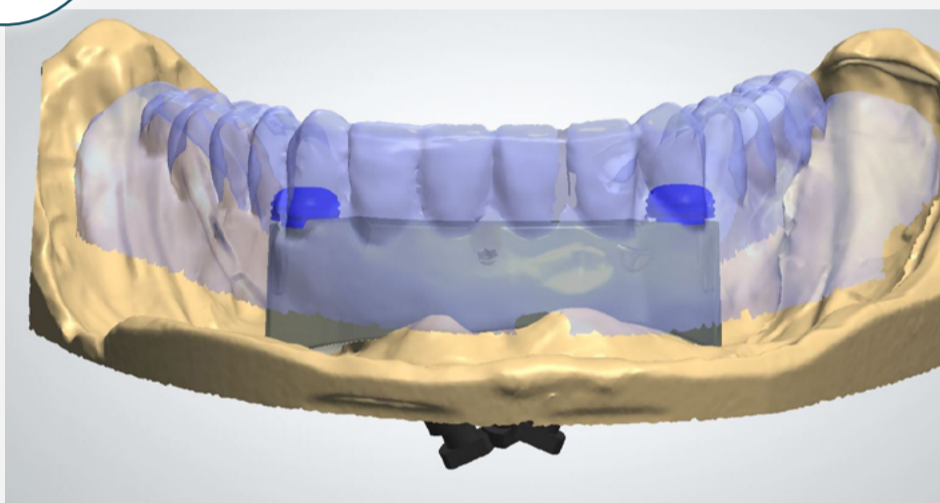


### CONSIDERATIONS

Severe mandibular atrophy had left very little space in which to place the implant due to the position of incisive canal. The best solution was a **grade V titanium** implant bar to distalise the retention elements (**Locator®**), giving the prosthesis stability and additional retention power.



### CAD

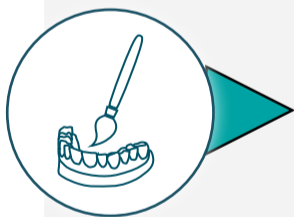


### CAD - CAM

The reduced thickness of the maxillary bone prevented parallel implant placement. This, however, was solved by splinting the implants using a grade V titanium **CAD-CAM** milled bar.

This type of bar can also be made using conventional milling techniques. However, **CAD-CAM** technology gives added value in terms of:

- Better design**
- Better fit**
- Less lab time**
- Simple technology**



Once the bars had been milled they were sent to the lab where the **Co-Cr** core reinforced superstructure was manufactured to fit the bar.



### FINAL RESULT



Collaborators:

